

An Introduction to Color in Medical Imaging

Kevin J. Parker

*Department of Electrical and Computer Engineering, University of Rochester,
Hopeman Building, Room 203, Rochester, New York 14627-0127*

E-mail: parker@seas.rochester.edu

Man Zhang

*Department of Biomedical Engineering, University of Rochester, Hopeman Building,
Room 332, Rochester, New York 14627-0127*

E-mail: mazhang@seas.rochester.edu

Deborah J. Rubens

*Department of Radiology and Surgery, University of Rochester Medical Center,
601 Elmwood Avenue,*

Box 648, Rochester, New York 14642

Abstract. *The field of radiology dates back to 1896 with the first direct x-ray exposure of film by Roentgen. For the next 80 years the exposure of black-and-white film by x-rays, and later, from calculated images from computed tomography scans, ultrasound scans, and magnetic resonance imaging scans would dominate the hard-copy world of medical imaging. The use of color was largely experimental and limited until the development of real-time color Doppler imaging in the early 1980s. Since that time, the use of color has grown rapidly as three-dimensional visualizations and multimodality or multispectral images become widely utilized. The rapid growth of imaging techniques that combine anatomical information with additional functional or molecular information is driving color to the forefront, since additional information needs to be fused in the renderings. Thus, 100 years after Roentgen's experiment, a century of monochrome imaging is giving way to an emerging need for color displays of medical images. © 2006 Society for Imaging Science and Technology.*

[DOI: 10.2352/J.ImagingSci.Technol.(2006)50:1(12)]

THE MONOCHROME ERA 1900–1980

The direct exposure of film by x-rays dominated radiological imaging for at least the first half-century after Roentgen's initial exposure of the human hand (Fig. 1). Due to the increasing understanding of the need to limit exposure to x-rays, a major early focus of development was on increasing the sensitivity of film, and developing contrast agents for enhancing the vasculature and uptake of contrast by organs and lesions. Many new techniques for obtaining tomographic and three-dimensional (3D) image data sets were developed in the second half of the 20th century; however, the great majority of computed tomography (CT) scans, ultrasound scans, and magnetic resonance imaging (MRI) scans up to the early 1980s were rendered and interpreted as monochrome images (Figs. 2–4). One early use of color involved multiple x-ray exposures of the same object using

different x-ray energy (Fig. 5 available in color as Supplemental Material on the IS&T website, www.imaging.org).¹ It is an empirical fact that the absorption of x-rays within bone and soft tissues is dependent on the wavelength (energy) of the x-ray source. Thus, multiple exposures of different x-ray wavelengths, when rendered as color channel information, were studied for the additional differential information that

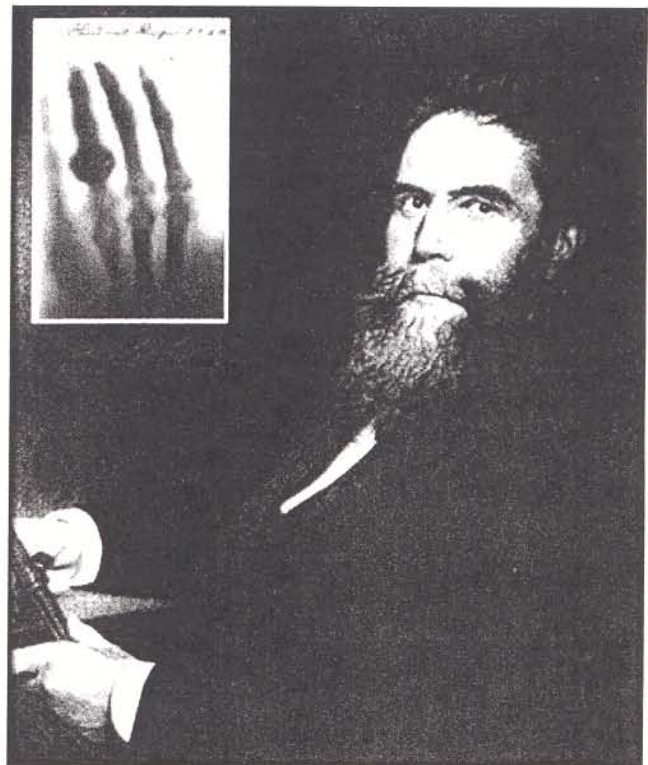


Figure 1. Wilhelm Roentgen with x-ray radiograph of his wife's hand (<http://www.learnxf.com>).

Received Feb. 3, 2005; accepted for publication Jun. 16, 2005.
1062-3701/2006/50(1)/12/5/\$20.00.

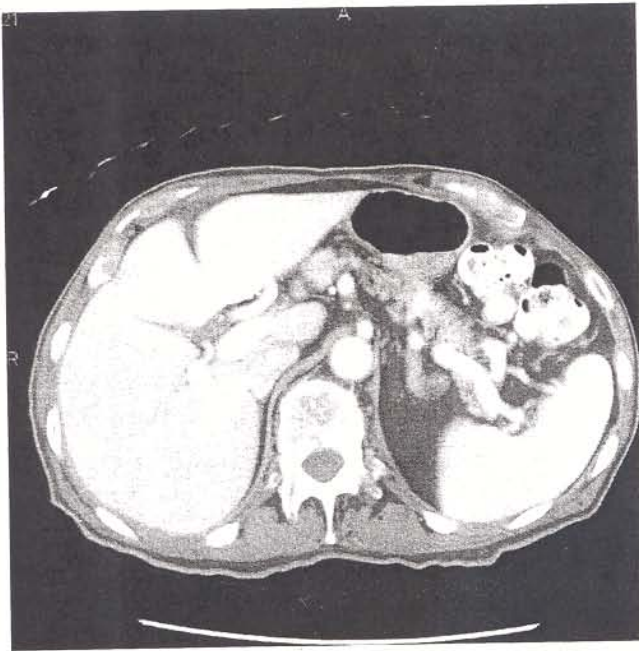


Figure 2. Computed tomography (CT) image of the human liver. (Permission from Dr. Deborah J. Rubens.)

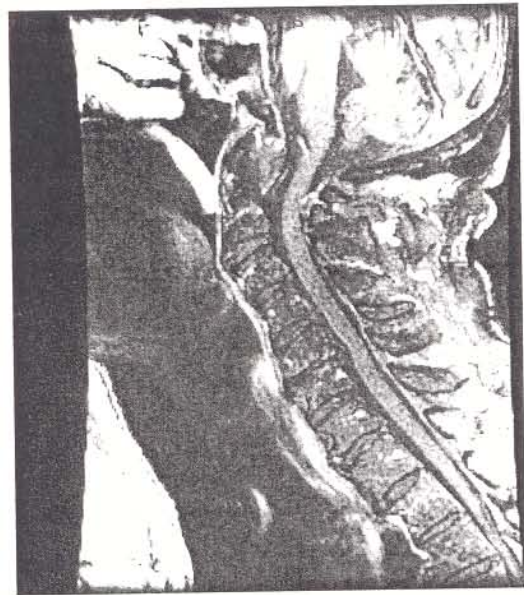


Figure 4. MRI image of the sagittal spine. (Permission from Dr. Deborah J. Rubens.)



Figure 3. Ultrasound image of the kidney. (Permission from GE Medical, copyright © GE Medical.)

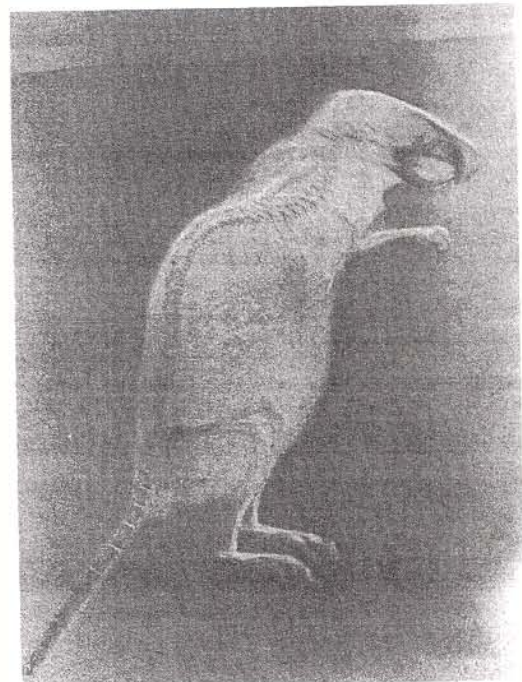


Figure 5. One of the first color x-ray pictures of a mouse. The picture displays and compares three independent pieces of information at every spot. The three negatives were radiographs made at 40, 60, 80 kv on anodes of iron, molybdenum, and silver, respectively. (*Medical Images and Displays*. Mackay RS. Copyright © 1984 John Wiley & Sons, Inc. Reprinted by permission of John Wiley & Sons, Inc.) (Available in color as Supplemental Material on the IS&T website, www.imaging.org)

they might contain. However, this technique had a number of disadvantages, including the need for higher total x-ray exposure, and it did not achieve widespread use.

THE ERA OF EMERGING COLOR 1980–2000

In the early 1980s, an ultrasound imaging company, Aloka, introduced a real-time color Doppler scanner. Blood flow velocity, previously unquantified in ultrasound (and x-ray and CT scans without specialized contrast protocols) could suddenly be visualized at many frames per second. Blood flow towards the scanner transducer was encoded as shades of red, with deeper saturation indicating higher velocities. Blood flow away from the scanner transducer was encoded

in blue. Additional information such as the turbulence of the flow was further encoded in color, using green or another hue and saturation combinations (Fig. 6 available in color as Supplemental Material on the IS&T website, www.imaging.org).² The ability to visualize an important

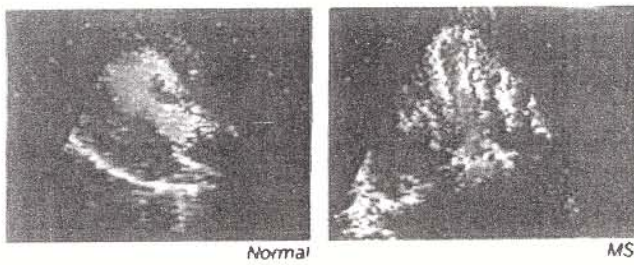


Figure 6. Color Doppler images were captured by Aloka SSD-880CW color Doppler system. It is the world's first system to display blood flow imaging in color and real time. (Permission from Dr. Joseph S.K. Woo.) (Available in color as Supplemental Material on the IS&T website, www.imaging.org)

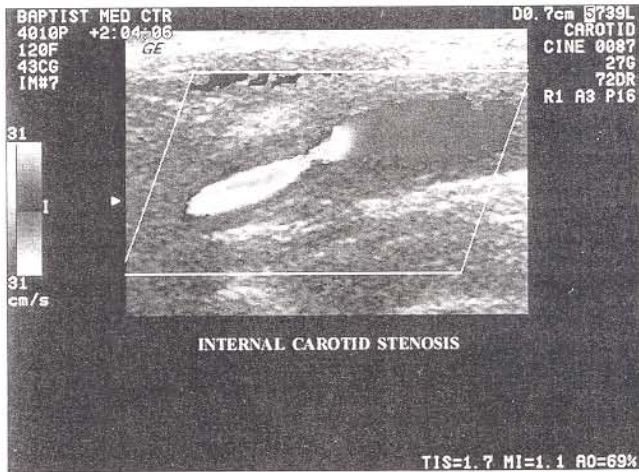


Figure 7. Color Doppler shows a longitudinal image of a patient with internal carotid artery stenosis. The internal carotid artery shows the area of narrowing with increased (aliased) flow denoted by the blue/yellow pattern. (Permission from GE Medical, copyright © GE Medical.) (Available in color as Supplemental Material on the IS&T website, www.imaging.org)

physiological parameter, blood flow direction, and velocity, including the timing with respect to the heart contraction cycle, was readily welcomed by the medical community.³ Within a few years time, every high end ultrasound scanner incorporated sophisticated color Doppler capabilities (Fig. 7 available in color as Supplemental Material on the IS&T website, www.imaging.org). A general principle that this case illustrates is that new information, beyond anatomy, needs color, and naturally makes use of color to superimpose the information on the black-and-white anatomical image. This widespread and sudden dissemination of color in medical imaging created a new opportunity for color hardcopy devices of still-frames and for color VCR recordings of the real-time color video sequences. Later, in the 1990s, the development of functional-MRI (*f*-MRI) images of brain activity (Fig. 8), as well as MRI diffusion tensor images for visualizing white matter fiber tracts (Fig. 9), would also produce color overlays on anatomical images.

Another emerging use of color during this period resulted from the increasing acquisition of 3D image data sets, particularly from CT and MRI scanners. The new availability

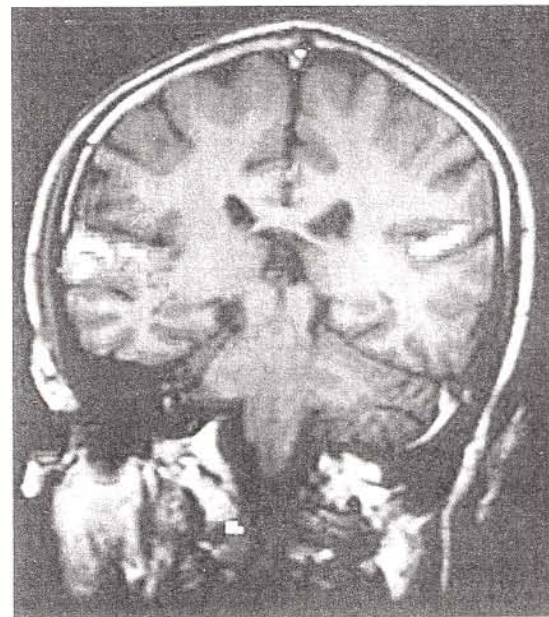


Figure 8. *f*MRI technique for medical diagnostic and neuroscience applications. (Permission from Dr. Jianhui Zhong.)

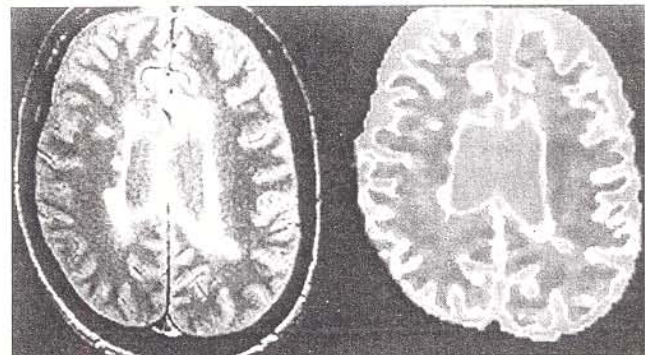


Figure 9. Comparison of MRI image and MRI diffusion tensor image of the brain. (Permission from Dr. Jianhui Zhong.)

of computer workstations during this period made it practical to render 3D visualizations of bones, blood vessels, organs, and muscles by segmenting discrete objects in the stack of two-dimensional images and then employing visualization techniques to display a 3D rendering (Fig. 10 available in color as Supplemental Material on the IS&T website, www.imaging.org). A natural tendency is to render the bones in white, the blood vessels in red, the liver in a deep maroon, and so forth to mimic the typical colors of these structures.⁴ However, during this era, these color renderings were limited to experimental uses, as significant labor was required to segment and render the visualizations. Furthermore, the main task of diagnosis continued to rely on the higher resolution monochrome tomographic images in their original state, before postprocessing for 3D renderings.

A different use of color that remained largely experimental (or did not achieve widespread use) was the use of subtle color shading called "B-color" in ultrasound imaging

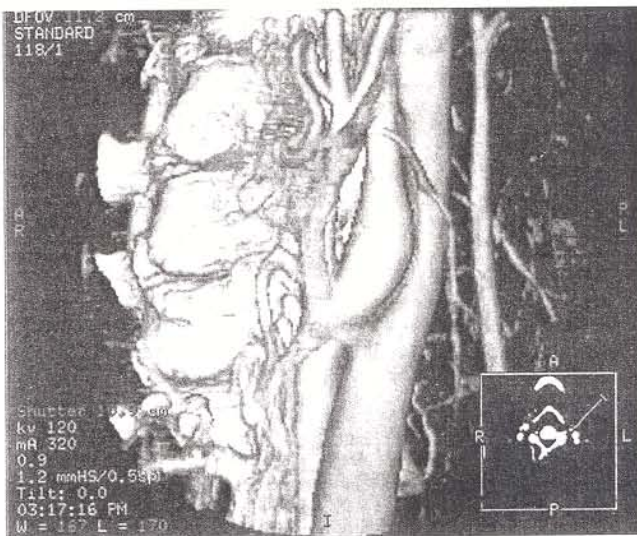


Figure 10. Color 3D rendering. (Permission from GE Medical, copyright © GE Medical.) (Available in color as Supplemental Material on the IS&T website, www.imaging.org)

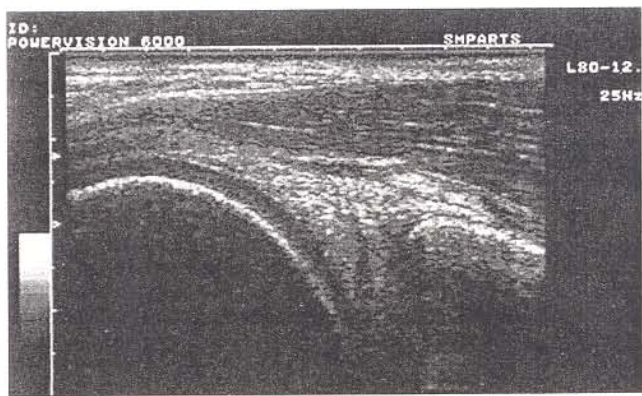


Figure 11. The B-color palette is used to increase the contrast, which emphasizes the meniscal tear. (Clinical Image made on the PowerVision 6000 Ultrasound System and courtesy of Toshiba Medical Systems Europe. Permission from Toshiba Medical Systems Europe.) (Available in color as Supplemental Material on the IS&T website, www.imaging.org)

(Fig. 11 available in color as Supplemental Material on the IS&T website, www.imaging.org).⁵ Human psychovisual experiments suggested that a subtle use of color shades in a high contrast image could enhance the detection of low-contrast lesions, as compared with the same task using conventional monochrome displays. It is important to note that these are not the garish “pseudocolor” mappings that were notorious in the early days of color display workstations. Rather, some subtle and continuous color shifts along with intensity were found to enhance human visual detection tasks. B-color has been available as an option on some high end scanners and is easy to implement by simply pushing a button. However, it has not been adapted to widespread, everyday use. This example, and the example of the 3D renderings, suggests that radiologists have a strong preference for traditional monochrome images unless new and additional physiological data are available for color rendering, as in the case of *f*-MRI and color Doppler.

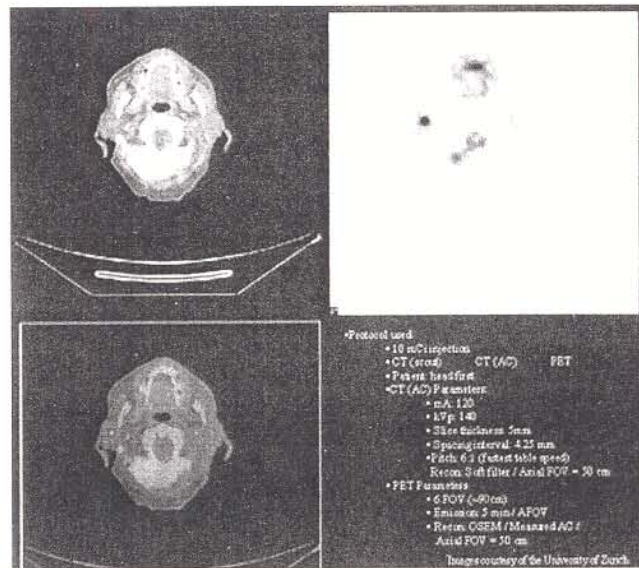


Figure 12. PET/CT demonstrates the tumor with extension over the mid-line anterior with destruction of the laryngeal cartilage and invasion of the soft tissue. (Permission from GE Medical, courtesy of University of Zurich.) (Available in color as Supplemental Material on the IS&T website, www.imaging.org)

COLOR IN RADIOLOGY IN THE 21ST CENTURY

A major leap forward for the detection of tumors has been achieved by the combination of positron emission tomography (PET) with CAT scan imaging: PET/CT.⁶ In this technique, the local uptake of a special radio-labeled glucose is imaged to produce exquisitely sensitive, but somewhat blurry 3D data sets. By concurrently scanning with CT, a high-resolution anatomical 3D stack of images can be obtained, and these can be coregistered against the PET scan. In this way, “hot spots” of uptake due to tumor growth can be located with confidence on specific structures such as the liver or the lymph nodes. To visualize this multichannel information as a coregistered 3D data set, color brings immediate advantages. Once again, the preferred anatomical rendering in monochrome (or with low saturation) can be produced from the CT data, with the additional information from PET superimposed using color schemes (Fig. 12 available in color as Supplemental Material on the IS&T website, www.imaging.org). Although PET/CT scanners are still limited in availability and are high cost, the rate of growth is dramatic. It is likely that the number of PET/CT scans will continue to grow rapidly in the US and other developed countries, and these images will require color displays and hardcopies.

Some of the techniques mentioned in the earlier section are also moving from experimental to mainstream. Specifically, fully automated 3D renderings of complex anatomy have been achieved by VirtualScopics (www.VirtualScopics.com), and this is expanding the use of color to new areas, including the change over time of anatomical structures known as “image biomarkers.” The concurrent dissemination of PACs systems for digital radiology

and of ever more powerful workstations makes it easier to create, manipulate, and communicate with 3D color renderings.

Other rapidly expanding sources of multispectral data come from the growing use of molecular imaging compounds and probes, and from multiple-pulse sequences in MRI. In these techniques, additional data are obtained, and this information must be coregistered with anatomical reference images. Color continues to be the dominant tool for achieving the desired synthesis.

It is germane to point out that this rapid growth of color images does not necessarily predict the end of monochrome images. For the foreseeable future, hundreds of millions of mammograms, chest x-rays, ultrasound scans, CAT scans, and MRI scans will continue to be read as monochrome images. However, the growing flood of coregistered functional and physiological data will continue to drive the advanced techniques into standardized color formats.

ACKNOWLEDGMENTS

This work was supported in part by NIH ROI 5-28905.

REFERENCES

- ¹R. S. Mackay, *Medical Images and Displays* (Wiley-Interscience, New York, 1984) p. ii.
- ²D. Maulik, N. C. Nanda, S. Moodley, V. D. Saini, and H. A. Thiede, "Application of Doppler echocardiography in the assessment of fetal cardiac disease", *Am. J. Obstet. Gynecol.* **151**, 7 (1985).
- ³D. Maulik, N. C. Nanda, M. C. Hsiung, and J. P. Youngblood, "Doppler color flow mapping of the fetal heart", *Angiology* **37**, 9 (1986).
- ⁴R. A. Drebin, L. Carpenter, and P. Hanrahan, "Volume rendering", *Proceedings of SIGGRAPH, 1988*, p. 65.
- ⁵Z. H. Huang, W. Y. Long, G. Y. Xie, O. L. Kwan, and A. N. DeMaria, "Comparison of gray-scale and B-color ultrasound images in evaluating left ventricular systolic function in coronary artery disease", *Am. Heart J.* **123**, 2 (1992).
- ⁶H. Schoder, U. E. Erdi, S. M. Larson, and H. Yeung, "PET/CT: A new imaging technology in nuclear medicine", *Eur. J. Nucl. Med. Mol. Imaging* **30**, 10 (2003).